



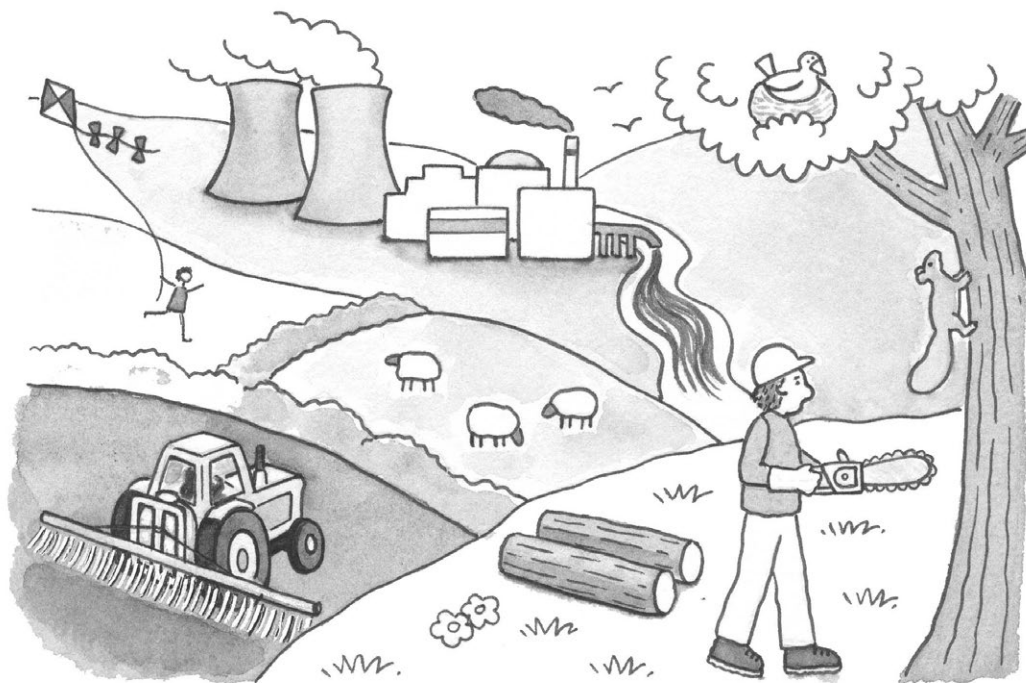
Be kind to Mother Nature!

Background knowledge

The activities of humans can affect the lives of plants and animals. *Pollution* from factories and cars can poison the air and water that plants and animals need to survive. When housing developments, roads, and malls are built, there is less open space for wildlife. Plants and animals need room to grow and reproduce. Humans also need to live and work, but there must be a balance between human need and the needs of plants and animals. Mother Nature is not happy when the balance is disturbed!

Science activity

Draw a circle around each thing in this picture that could cause harm to animals and plants.



Science investigation

⚠️ **Take extra care - ask an adult to supervise you.**

Learn about local air pollution by attaching some masking tape, sticky side facing the air, to the outside of a window on each side of your house. Leave it there a week. Then use a magnifying glass to look at the tape. Compare it to fresh tape. What can you observe? Explain.



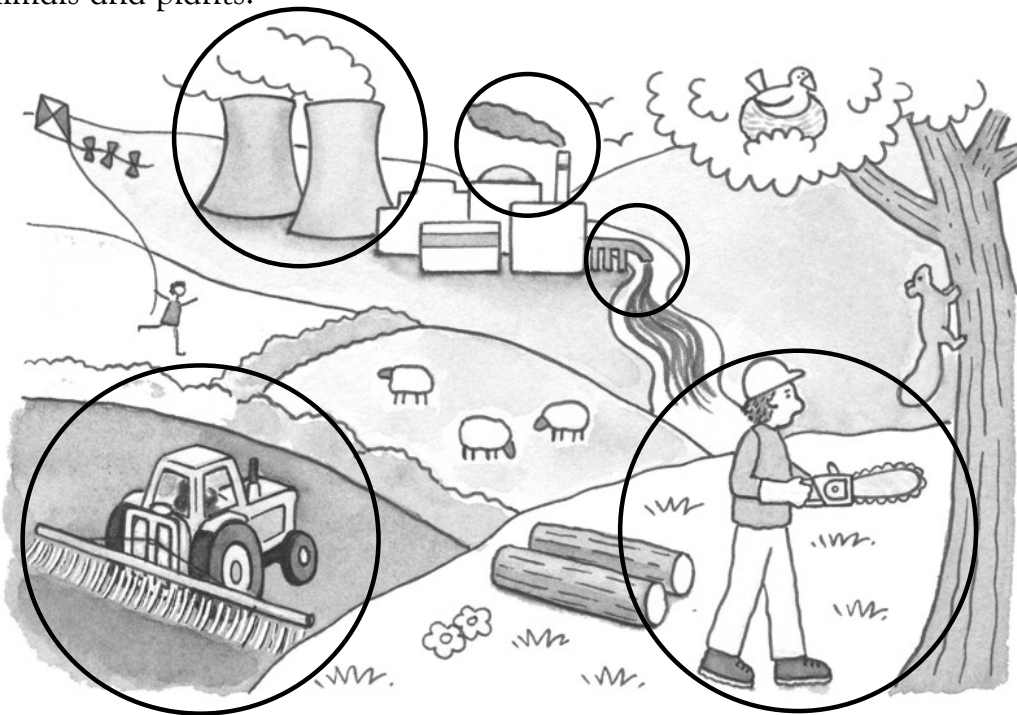
Be kind to Mother Nature!

Background knowledge

The activities of humans can affect the lives of plants and animals. *Pollution* from factories and cars can poison the air and water that plants and animals need to survive. When housing developments, roads, and malls are built, there is less open space for wildlife. Plants and animals need room to grow and reproduce. Humans also need to live and work, but there must be a balance between human needs and the needs of plants and animals. Mother Nature is not happy when the balance is disturbed!

Science activity

Draw a circle around each thing in this picture that could cause harm to animals and plants.



Science investigation

❗ The masking tape experiment will show the child the many “invisible” particles in air. The direction of air currents around a building may affect the number of particles on the tape.